



## Container packages for APT-100-125 and APT-250 plasma systems

Everyone who buys contemporary high power equipment asks the same question – what else do I need for its reliable operation? Even the detailed list in hand cannot make you happy because longer list – more time and money you should spend on the selection, acquisition and merging all the auxiliary systems and devices to ensure that your unique equipment works as the Swiss watch. To speed up the start-up process and make it simpler, we offer the **Container Package** as a turnkey approach for all types of the RF plasma systems Applied Plasma Technologies, Corp. has in production.

**The Container Package** includes all you need for the specific plasma system operation, feedstock storing and processing, operating team comfort and safety:

- Two-story custom designed container-type fast assembling metal building with insulated panels, two double-door entrances for equipment loading, eight windows. Total floor area ~1,400 sq. ft.
- 3 x 480VAC, 60 Hz or 3 x 380VAC, 50 Hz input voltage
- 150 kW to 400 kW input power
- 110 V, 208 V and 480V circuits, including power panels, switches, receptacles
- LED lights with 7 years warranty
- 30-45 t cooling capacity multi-loop water system
- Water & Sewer
- Toilet and shower
- Stainless steel utility sink
- Multi-zone HVAC
- Ventilation system

**Dimensions (external): 40' (L) x 21' (W) x 20' (H)**

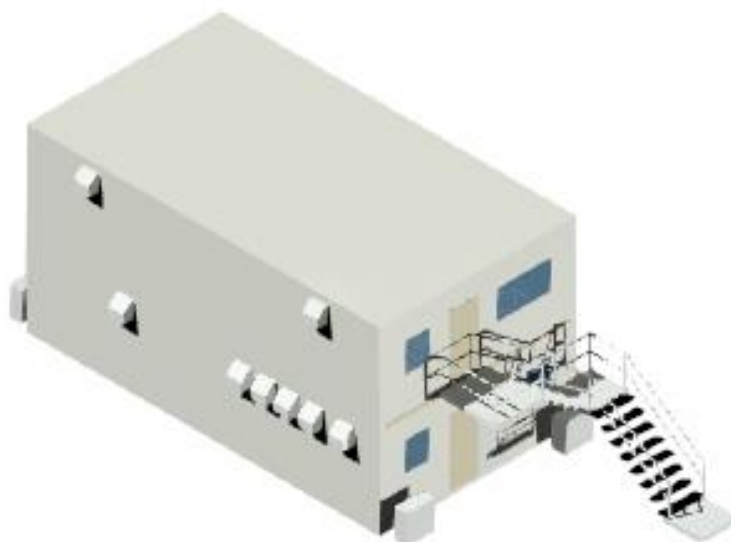


Fig.1. Appearance of the Container package for APT-100-125 or APT-250 plasma systems

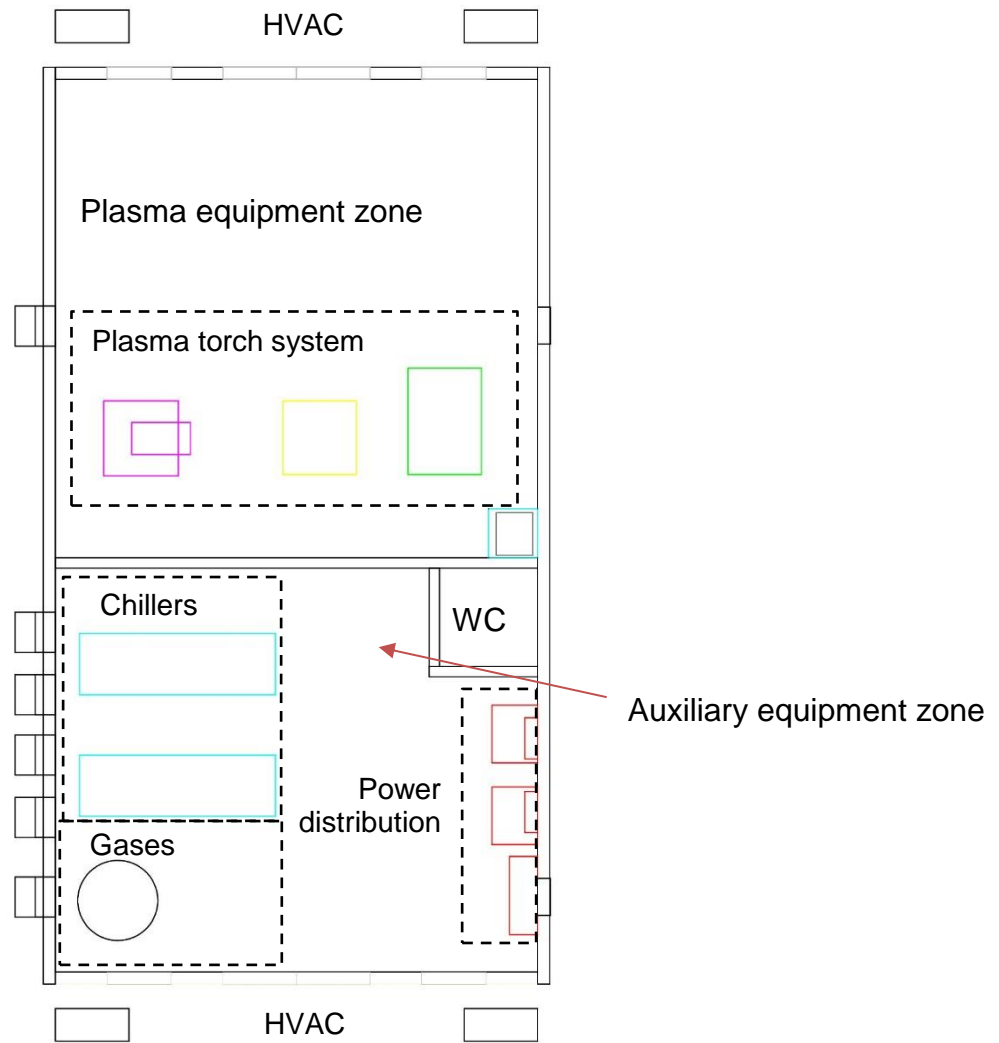


Fig.2. First level floor plan of the Container package for APT-100-125 or APT-250 plasma systems

The container has at least three working zones:

- 400 sq. ft. main plasma equipment zone
- 300 sq. ft. auxiliary equipment zone
- 700 sq.ft. second floor office and reactor maintenance area

The floor plan and set of equipment could be customized depending on application and preferences.

Please give us a call for more details.